



Features

- Single and dual section control
- Metal shaft styles
- Carbon element
- Center detent option
- Wide range of resistance tapers
- Plain or knurled shaft options
- Linear, audio and reverse audio taper options
- RoHS compliant*

PDB18 Series - 17 mm Rotary Potentiometer

Electrical Characteristics

TaperLinear, audio
 Standard Resistance Range
1 K ohms to 1 M ohms
 Standard Resistance Tolerance±20 %
 Residual Resistance1 % max.

Environmental Characteristics

Operating Temperature
-10 °C to +50 °C
 Power Rating
 Linear0.2 watt
 Dual Section.....0.125 watt
 Audio0.1 watt
 Dual Section.....0.06 watt
 Maximum Operating Voltage
 Linear200 V
 Audio150 V
 Sliding Noise47 mV max.

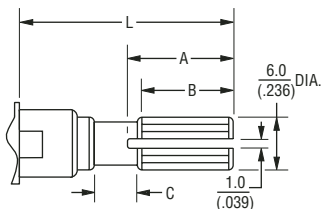
Mechanical Characteristics

Mechanical Angle300 ° ±5 °
 Rotational Torque50 to 350 g-cm
 Detent Torque.....150 to 500 g-cm
 Stop Strength.....5 kg-cm min.
 Rotational Life.....15,000 cycles
 Soldering Condition
260 °C max. within 3 seconds
 HardwareOne flat washer and
 mounting nut supplied per
 potentiometer with bushing

Shaft Styles

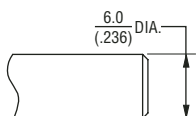
K Type

L	20 (.787)	25 (.984)	30 (1.181)
A	12 (.472)	14 (.551)	12 (.472)
B	10 (.393)	12 (.472)	14 (.551)
C	2 (.078)	2 (.078)	4 (.157)



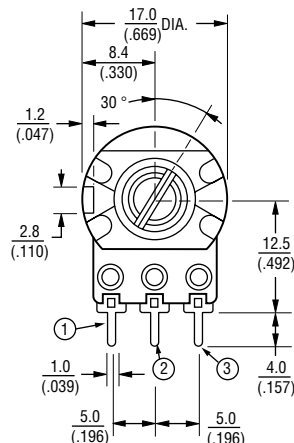
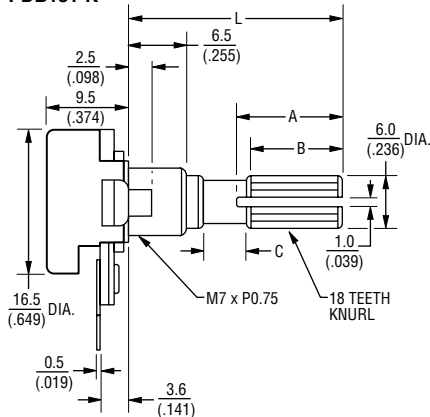
P Type

L	20 (.787)	25 (.984)	30 (1.181)
---	--------------	--------------	---------------



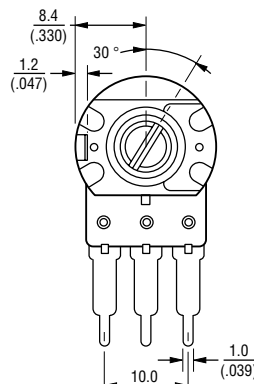
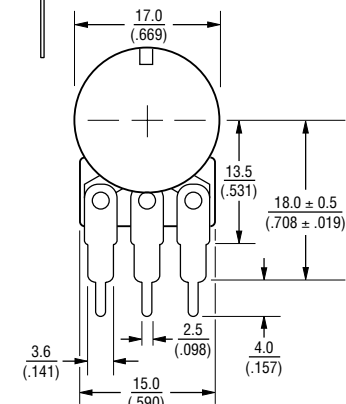
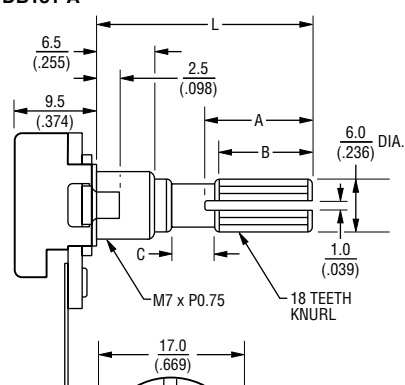
Product Dimensions

PDB181-K



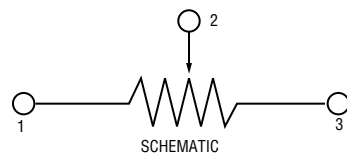
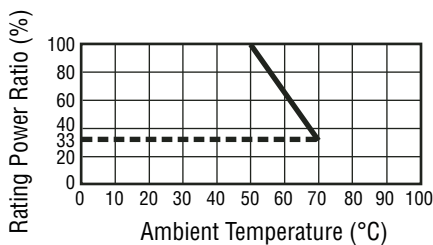
DIMENSIONS ARE: $\frac{\text{MM}}{\text{(INCHES)}}$

PDB181-A



SHAFT SHOWN IN CCW POSITION

Derating Curve



*RoHS Directive 2002/95/EC Jan 27 2003 including Annex.
 Specifications are subject to change without notice.
 Customers should verify actual device performance in their specific applications.

Applications

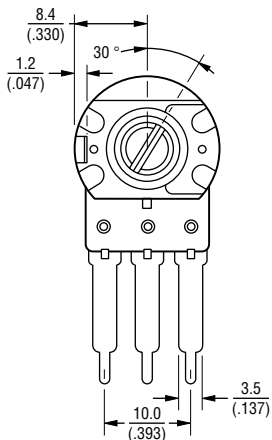
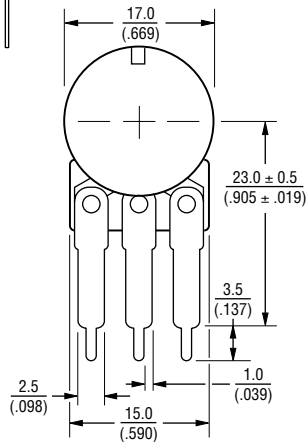
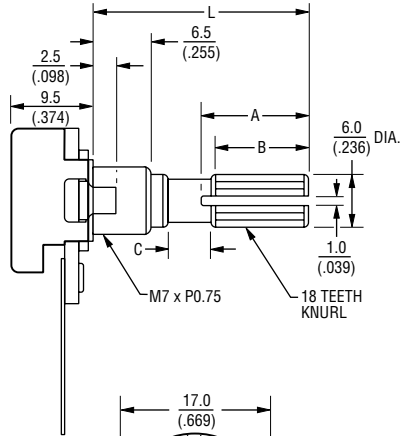
- Audio/TV sets
- Car radio
- Amplifiers/mixers/drum machines/synthesizers
- PCs/monitors
- Appliances

PDB18 Series - 17 mm Rotary Potentiometer

BOURNS®

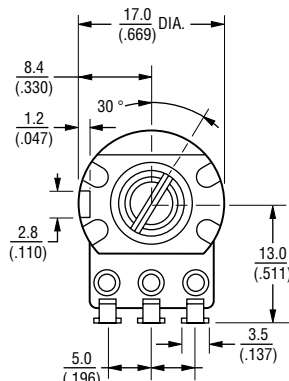
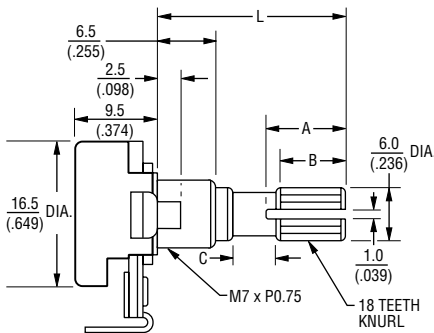
Product Dimensions

PDB181-B



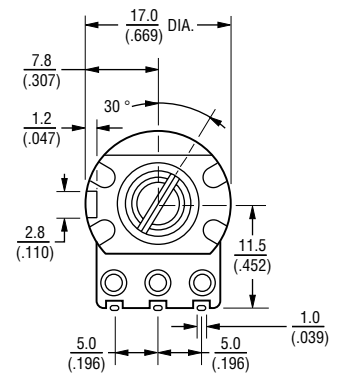
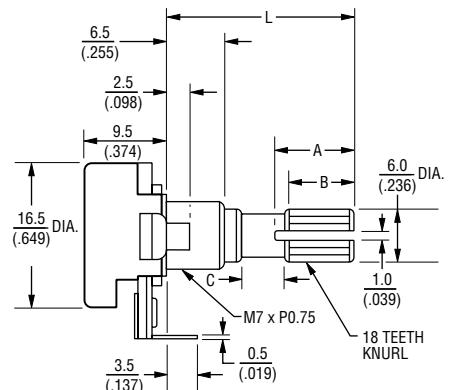
SHAFT SHOWN IN CCW POSITION

PDB181-E



SHAFT SHOWN IN CCW POSITION

PDB181-D



SHAFT SHOWN IN CCW POSITION

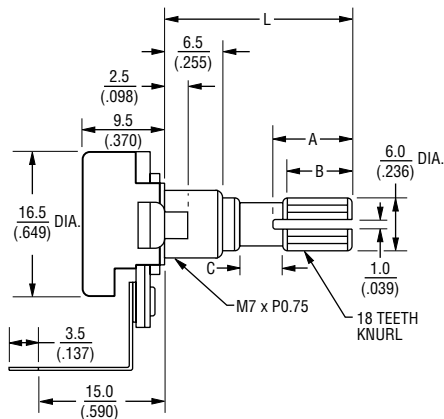
DIMENSIONS ARE: $\frac{\text{MM}}{\text{(INCHES)}}$

PDB18 Series - 17 mm Rotary Potentiometer

BOURNS®

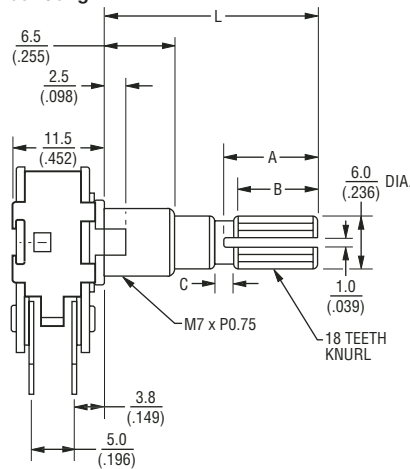
Product Dimensions

PDB181-P

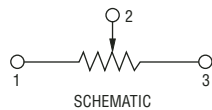


SHAFT SHOWN IN CCW POSITION

**PDB182-K
Dual Gang**

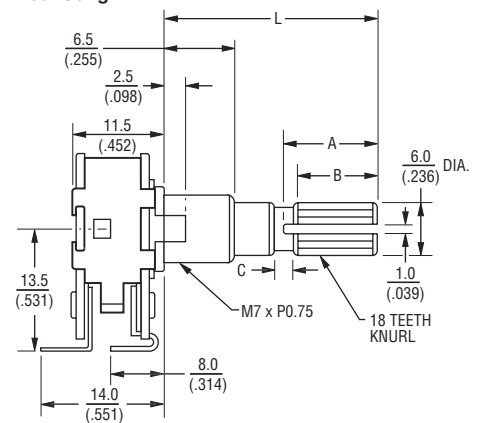


SHAFT SHOWN IN CCW POSITION



SCHEMATIC

**PDB182-E
Dual Gang**



SHAFT SHOWN IN CCW POSITION

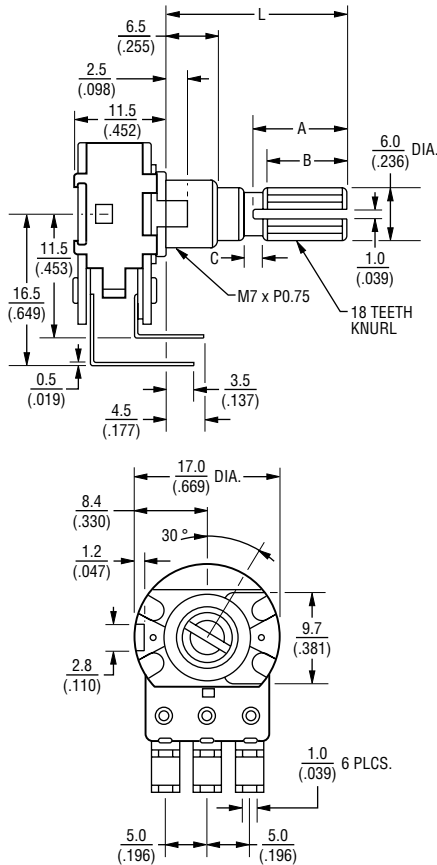
DIMENSIONS ARE: $\frac{\text{MM}}{\text{(INCHES)}}$

PDB18 Series - 17 mm Rotary Potentiometer

BOURNS®

Product Dimensions

PDB182-D Dual Gang



SHAFT SHOWN IN CCW POSITION

DIMENSIONS ARE: $\frac{\text{MM}}{\text{(INCHES)}}$

How To Order

PDB18 1 - K 4 25 K - 103 A1

- Model
- Number of Sections
- 1 = Single Section
 - 2 = Dual Section
- Terminal Configuration (Pin Layout) (see individual drawings)
- K = PC Pins vertical/Down Facing (12.5 mm)
 - A = PC Pins vertical/Down Facing (18.0 mm)
 - B = PC Pins vertical/Down Facing (23.0 mm)
 - E = Solder Lugs Rear Facing
 - P = PC Pins Rear Facing
 - D = PC Pins Front Facing
- Detent Option
- 2 = Center Detent
 - 4 = No Detents
 - 5 = 11 Detents
 - 6 = 21 Detents
 - 7 = 31 Detents
 - 8 = 41 Detents
- Standard Shaft Length
- 20 = 20 mm
 - 25 = 25 mm
 - 30 = 30 mm
- Shaft Style
- K = Metal Knurled Type Shaft
 - 18 Toothed Serration Type
 - P = Metal Plain Shaft
- Resistance Code (See Table)
- Resistance Taper (See Taper Charts)
- Taper Series followed by Curve Number
- Other styles available.

Standard Resistance Table

Resistance (Ohms)	Resistance Code
1,000	102
2,000	202
5,000	502
10,000	103
20,000	203
50,000	503
100,000	104
200,000	204
500,000	504
1,000,000	105

Tapers

